



Rivers to Ramsar – Improving catchment and wetland health at Pitt Water-Orielton Lagoon

Request for Proposal (RFP)

NRM South is seeking a contractor to collect spatial site information to inform site management.

ABOUT US

NRM South is a not-for-profit organisation (incorporated association) with charity status, established in 2003 in response to the Tasmanian Natural Resource Management Act 2002. We work to keep the natural and productive landscapes of southern Tasmania healthy and sustainable into the future (and partner state-wide with NRM sister organisations; NRM North and the Cradle Coast Authority). We play a key role in building partnerships, securing and directing investment, connecting knowledge and expertise to action, and increasing the capacity of others to engage in NRM activities.

We are a team of ~22 staff, operating out of our Hobart-based offices, who deliver projects through a blended delivery model that includes aspects of research, development, extension, education and awareness. We partner with industry, research organisations, community groups, governments and private landholders to address natural resource management issues and to better understand, protect and manage our region's diverse natural assets.

More information about NRM South is available on our website (including our 2030 Regional Strategy for southern Tasmania): www.nrmsouth.org.au

PROJECT OVERVIEW

NRM South's Rivers to Ramsar project is a three-year project focused on restoring and rehabilitating riparian zones across public and private land along three key waterways—Frogmore Creek, Orielson Rivulet, and Sorell Rivulet. These waterways flow into Pitt Water-Orielson Lagoon, a Ramsar-listed wetland situated near a rapidly growing urban centre. The project aims to enhance critical wetland habitats for threatened migratory birds, reconnect important habitat corridors, and reduce nutrient and sediment runoff. Key actions in the project include:

- Establishing a monitoring program to track environmental, physical, and biogeochemical changes.
- Removing waste fencing and materials to improve access and safety for fauna.
- Enhancing riparian corridors and wetland communities through willow and weed removal.
- Restoring native woody and grassy riparian habitats along the waterways and within the wetland complex.
- Improving tidal hydrology by removing infill in priority areas within the wetland.
- Restricting livestock and vehicle access to support revegetation and reduce runoff.

These actions are addressing the threats posed by weeds, altered sediment transport, agricultural activities, stormwater pollution, urban development and climate change.

This project is part of the Australian Government's \$200 million Urban Rivers and Catchments Program, which is working to restore the health of our urban waterways for native plants, animals and local communities.

SCOPE OF WORK

NRM South seeks a qualified consultant to collect spatial data and aerial imagery of the project areas to support project planning, site management, and restoration efforts. The collected data will serve as a baseline for monitoring environmental changes over time. The areas of interest for the project are outlined in **Attachment 1**. The consultant is to advise on the appropriate survey scope needed to capture the relevant information for the project.

1. Data collection and field surveys

- Conduct aerial surveys to capture high-resolution imagery of the project site.
- Collect spatial data on key environmental features, which may include:
 - Functional riparian habitat (e.g. length, width, condition and composition).
 - Hydrological characteristics (e.g., surface water flow, flood risk).
 - Topography and elevation data.
 - Existing threatening processes (e.g., erosion, invasive species, infrastructure impacts).

2. Data processing and analysis

- Process and analyse spatial data to create georeferenced maps and datasets.
- Ensure all data is compatible with NRM South's existing systems (QGIS).
- Provide expert interpretation based on collected data.

3. Reporting and deliverables

- Deliver high-quality spatial data in compatible formats with NRM South's existing system (QGIS).
- Develop a summary report including data collection techniques, equipment used, and any limitations, key findings, spatial analysis, and recommendations for site management.

This scope of work covers a single baseline spatial data survey; however, additional surveys to capture seasonal variations or monitor changes over time may be considered at a later stage.

FORM OF RESPONSE

Please provide a proposal which includes:

- Advice on the most appropriate data resolution and accuracy for the project's needs.
- Recommendations on:
 - An appropriate survey buffer around waterways to capture both natural assets and surrounding land use, including:
 - Minimum scope: The minimal survey extent required to meet the project's objectives.
 - Maximum scope: A more extensive survey to gather additional or more detailed information, if needed. Not exceeding the property boundaries of the properties immediately adjacent to the waterways.
 - Suggested remote sensing and survey methods best suited for the project area.
 - The need for multiple surveys (e.g., to capture seasonal variations or monitor changes over time) and outline the potential benefits.
 - How the collected data can inform restoration activities, such as revegetation, erosion control, and fencing.
- Any required permits or approvals for data collection and provide estimated timeframes for obtaining them.
- An itemised cost estimate, including minimum-maximum ranges if relevant.
- Outline the knowledge and skills of your team relevant to the project.
- Availability to undertake the work and provide proposed timelines for project completion.

DELIVERY DATE

The indicative milestones for the scope of works are outlined below; however, these can be negotiated with NRM South as required:

1. Data collection and field surveys: By 15 April 2025
2. Data processing and analysis: By 30 April 2025
3. Reporting and deliverables: By COB 16 May 2025

SELECTION CRITERIA

Proposals will be assessed according to the following criteria. Assessment weightings will apply as indicated for each criterion.

Criteria	Weighting
Merit of proposed approach and understanding of the tasks and issues involved	30%
Relevant experience conducting similar work and project team experience	30%
Value for money	20%
Availability to conduct work within the identified timeframe	10%
Ability to work effectively with the project team and partners	5%
Understanding and experience working within an Australian Government Procurement Framework	5%

Other criteria that may be considered in the assessment (unweighted) include:

- Local procurement (Tasmanian businesses)
- Demonstrated environmental sustainability measures (e.g. corporate ESG framework or similar)
- Support for Aboriginal outcomes in Tasmania (e.g. Aboriginal employment or procurement of services, Reconciliation Action Plan or similar policy in place)

CONDITIONS OF PARTICIPATION

Respondents must be registered to operate within Australia and have an Australian bank account.

INSURANCE

Responses must note that current public liability and workers compensation insurances are held by the contractor that will be valid at the time of fence construction. The successful contractor must provide certificates for these insurances to NRM South prior to a contract being signed.

CLOSING DATE

All proposals must be received by: 5pm Wednesday 2 April 2025. Late responses may not be considered.

Lodgement can be made by email to: ajensen@nrmsouth.org.au. Respondents will receive acknowledgement of receipt by email.

CONTACT INFORMATION

For further information, please contact:

Amelia Jensen

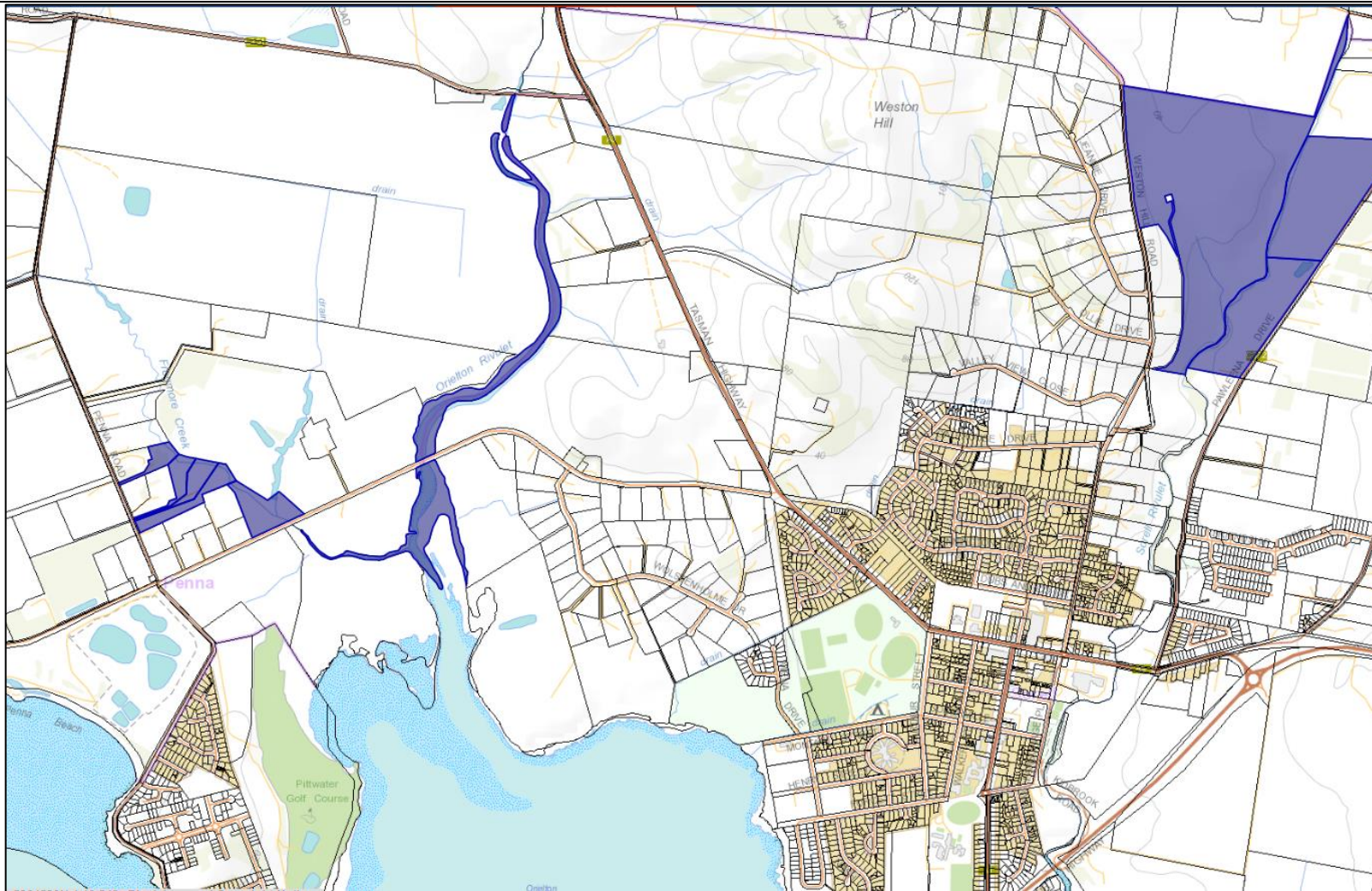
Project Officer


NRM South

0406 710 072

ajensen@nrmsouth.org.au

ATTACHMENT 1 – PROJECT AREA MAP



 Key project areas

Level 1, 89 Brisbane Street | PO Box 4657, Hobart TAS 7000 | Phone: 0447 266 527
Email: admin@nrmsouth.org.au | Web: www.nrmsouth.org.au